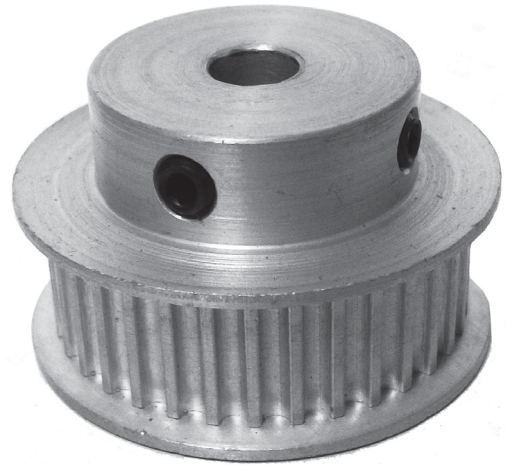


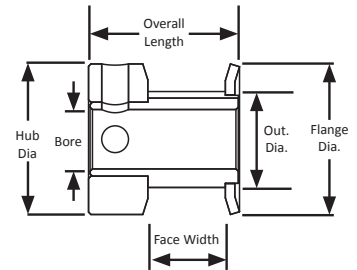
POWERHOUSE™ HTD® TIMING PULLEYS

3 mm Pitch
For 9 mm Wide Belts
Hub and Flanges
Aluminum
Clear Anodized
Finished Bore

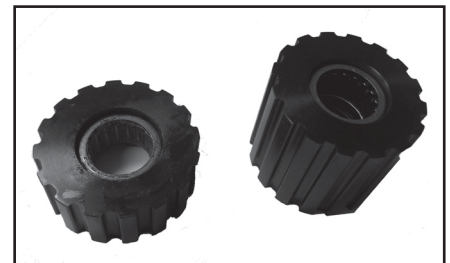
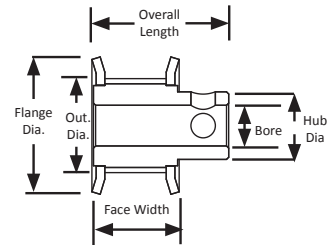


Part Number	No. of Teeth	Type	Pitch Dia. (in)	Out. Dia. (in)	Flange Dia. (in)	Bore (in)	Face Width (in)	Overall Length (in)	Hub Dia. (in)	Set Screw
10-3M09-6CA1	10	6C	0.376	0.346	0.505	0.125	0.446	0.681	0.505	1 x 4-40
10-3M09-6CA2	10	6C	0.376	0.346	0.505	0.188	0.446	0.681	0.505	1 x 4-40
11-3M09-6CA1	11	6C	0.414	0.384	0.530	0.125	0.446	0.681	0.530	1 x 4-40
12-3M09-6CA2	12	6C	0.451	0.421	0.580	0.188	0.446	0.681	0.580	1 x 6-40
13-3M09-6CA2	13	6C	0.489	0.459	0.610	0.188	0.453	0.691	0.610	1 x 6-40
14-3M09-6CA2	14	6C	0.526	0.496	0.635	0.188	0.453	0.691	0.635	2 x 6-40 @ 90°
14-3M09-6CA3	14	6C	0.526	0.496	0.635	0.250	0.453	0.691	0.635	2 x 6-40 @ 90°
15-3M09-6CA2	15	6C	0.564	0.534	0.685	0.188	0.453	0.691	0.685	2 x 6-40 @ 90°
16-3M09-6CA2	16	6C	0.602	0.572	0.710	0.188	0.453	0.691	0.710	2 x 6-40 @ 90°
16-3M09-6CA3	16	6C	0.602	0.572	0.710	0.250	0.453	0.691	0.710	2 x 6-40 @ 90°
17-3M09-6CA2	17	6C	0.639	0.609	0.740	0.188	0.453	0.691	0.740	2 x 6-40 @ 90°
18-3M09-6FA3	18	6F	0.677	0.647	0.790	0.250	0.506	0.812	0.442	2 x 8-32 @ 90°
19-3M09-6FA3	19	6F	0.714	0.684	0.815	0.250	0.506	0.812	0.468	2 x 8-32 @ 90°
20-3M09-6FA3	20	6F	0.752	0.722	0.895	0.250	0.506	0.812	0.500	2 x 8-32 @ 90°
22-3M09-6FA3	22	6F	0.827	0.797	0.945	0.250	0.506	0.812	0.562	2 x 8-32 @ 90°
24-3M09-6FA3	24	6F	0.902	0.872	1.025	0.250	0.506	0.812	0.625	2 x 8-32 @ 90°
25-3M09-6FA3	25	6F	0.940	0.910	1.060	0.250	0.506	0.812	0.625	2 x 8-32 @ 90°
26-3M09-6FA3	26	6F	0.977	0.947	1.105	0.250	0.506	0.812	0.625	2 x 8-32 @ 90°
28-3M09-6FA3	28	6F	1.053	1.023	1.173	0.250	0.506	0.812	0.701	2 x 8-32 @ 90°
30-3M09-6FA3	30	6F	1.128	1.098	1.250	0.250	0.506	0.812	0.776	2 x 8-32 @ 90°
30-3M09-6FA6	30	6F	1.128	1.098	1.250	0.500	0.506	0.812	0.776	2 x 8-32 @ 90°
32-3M09-6FA3	32	6F	1.203	1.173	1.323	0.250	0.506	0.812	0.851	2 x 8-32 @ 90°
32-3M09-6FA6	32	6F	1.203	1.173	1.323	0.500	0.506	0.812	0.851	2 x 8-32 @ 90°
34-3M09-6FA3	34	6F	1.278	1.248	1.398	0.250	0.527	0.833	0.921	2 x 8-32 @ 90°
36-3M09-6FA3	36	6F	1.353	1.323	1.473	0.250	0.527	0.833	1.000	2 x 8-32 @ 90°
38-3M09-6FA3	38	6F	1.429	1.399	1.549	0.250	0.527	0.833	1.075	2 x 8-32 @ 90°
40-3M09-6FA3	40	6F	1.504	1.474	1.625	0.250	0.527	0.833	1.150	2 x 8-32 @ 90°
44-3M09-6FA3	44	6F	1.654	1.624	1.775	0.250	0.527	0.833	1.300	2 x 8-32 @ 90°
44-3M09-6FA6	44	6F	1.654	1.624	1.775	0.500	0.527	0.833	1.300	2 x 8-32 @ 90°

TYPE 6C



TYPE 6F



For idler pulleys,
see page 366.